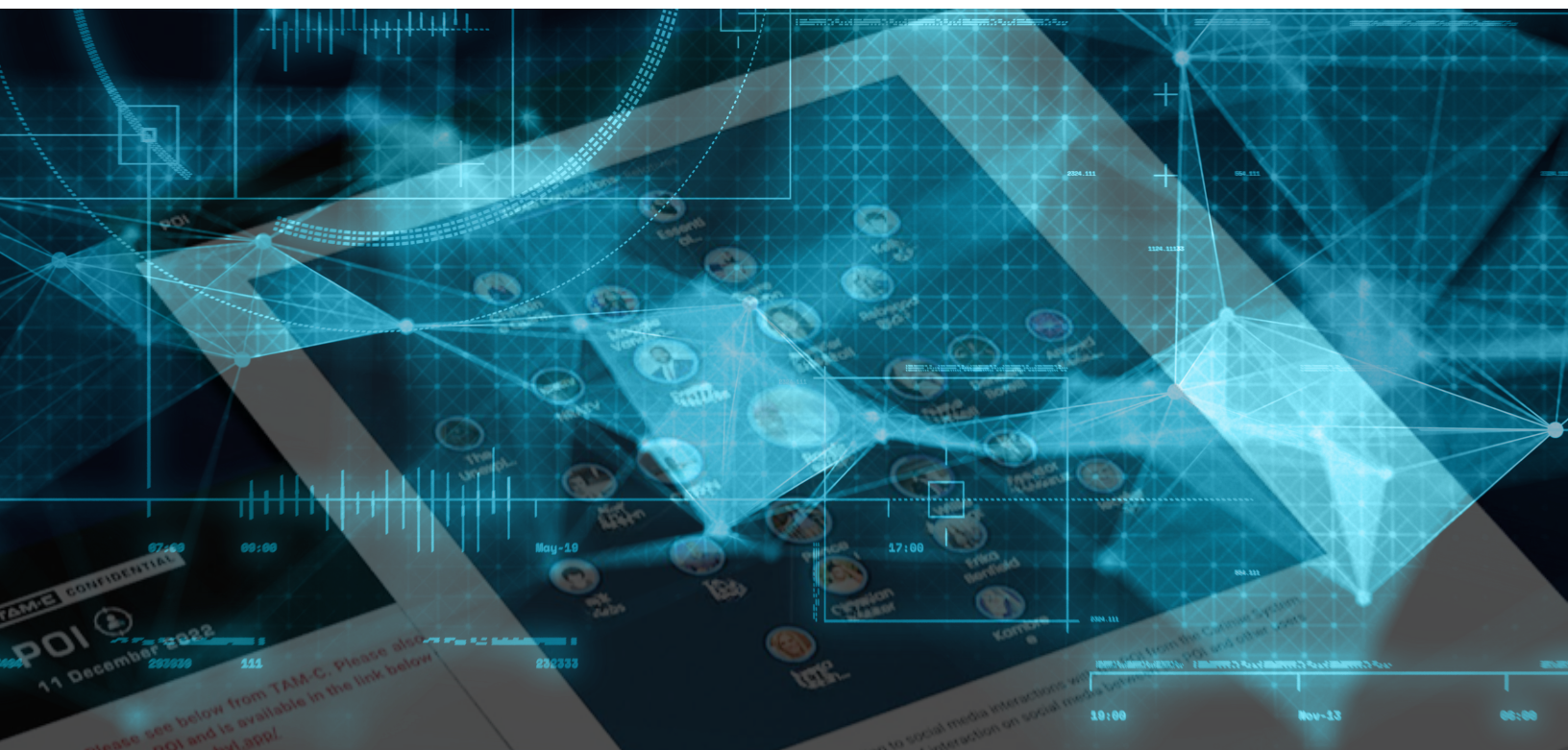




INTELLIGENCE CENTRAL

EARLY WARNING INSIDER THREAT TIERED METHODOLOGY



USED WITH MODEL DRIVEN AI, VERIFIED BY TEAM TAM-C

The program identifies, analyzes, and monitors indicators that are indicative of external and internal vulnerabilities to the client.

A customized threat matrix and risk cycle targets threats to intellectual property, corporate espionage, workplace violence, radicalization and criminal behavior of individuals and groups.

A PATENTED PLATFORM

Developed with a unique and innovative hybrid approach to intelligence collection, analysis, and monitoring. The battle-tested methodology is based on years of machine learning combined with advanced AI tools that are simple and transparent to convert complex data sets into a crystal clear visual screen.

WEALTH OF INFORMATION

Advanced AI-platform, we leverage state-of-the-art algorithms and machine learning capabilities to conduct thorough investigations and capture a wealth of information related to the threat. This includes original content, photos, shared posts, comments, and "likes," providing a comprehensive digital footprint.

A COMPREHENSIVE DIGITAL FOOTPRINT

The platform's capabilities extend beyond mere data aggregation, as it employs link analysis techniques to establish connections between the threat and other potential primary and secondary actors. By uncovering these intricate relationships, ARGO enhances our understanding of the network surrounding the suspect and sheds light on potential threats or affiliations.

The power of a patented AI-ML platform with the robustness of information collection streams, creates a synergistic relationship that maximizes the effectiveness of data mining, acquisition, and analytics.

The patented platform utilizes advanced formulas, algorithms and machine learning techniques to process vast amounts of data from diverse sources.

LET'S DISCUSS YOUR INTELLIGENCE NEEDS

24H: +1.202.922.0068

TAMC365.COM

Trusted by 25% of all Fortune 500 companies worldwide, Western governments and fellow intelligence agencies, TAM-C is the world's preferred agency of intelligence & risk assessment providing state-level intelligence, reconnaissance, and field support to corporations, executive protection & law enforcement entities that rely on critical security operations for real-time and systemic threat prevention year-round.

Risk Assessment

intelligence & Reporting

Global Field Ops

K.R.E.M. Travel Insurance

